

Bell Work

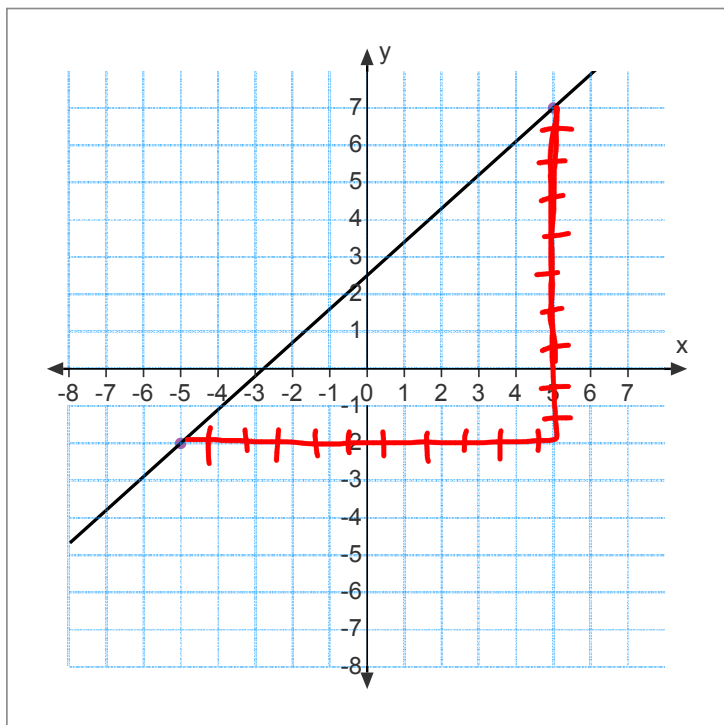
3/2/2015

Please get a small piece of paper and write  
down the following:

*What are the different ways to remember  
slope? You may use drawings!*



## Slope Face



## Slope

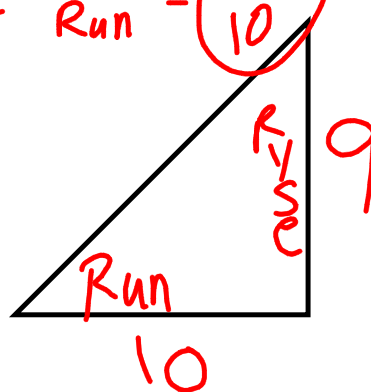
Pos.

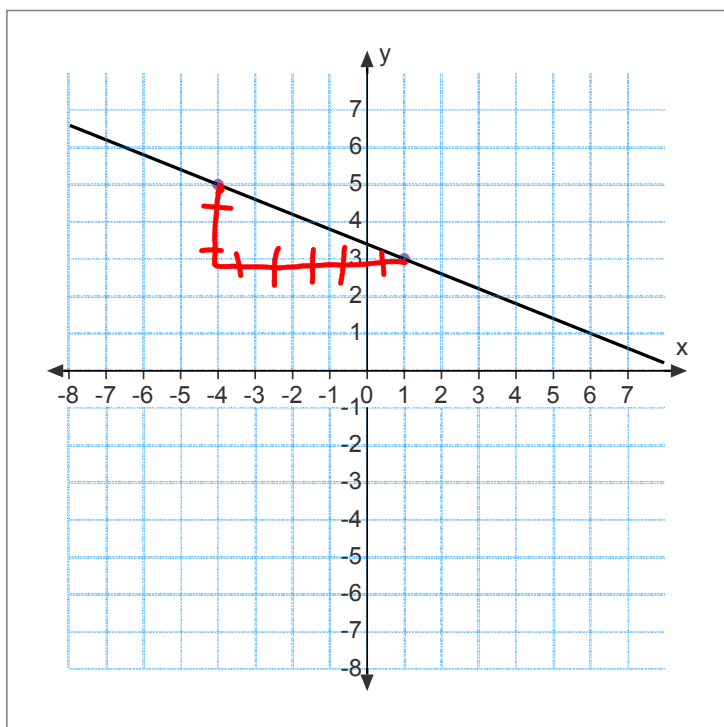
Neg.

Zero

Undefined

$$\text{Slope} = \frac{\text{Ryse}}{\text{Run}} = \frac{9}{10}$$





## Slope

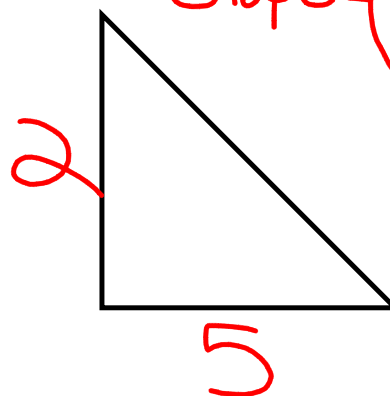
Pos.

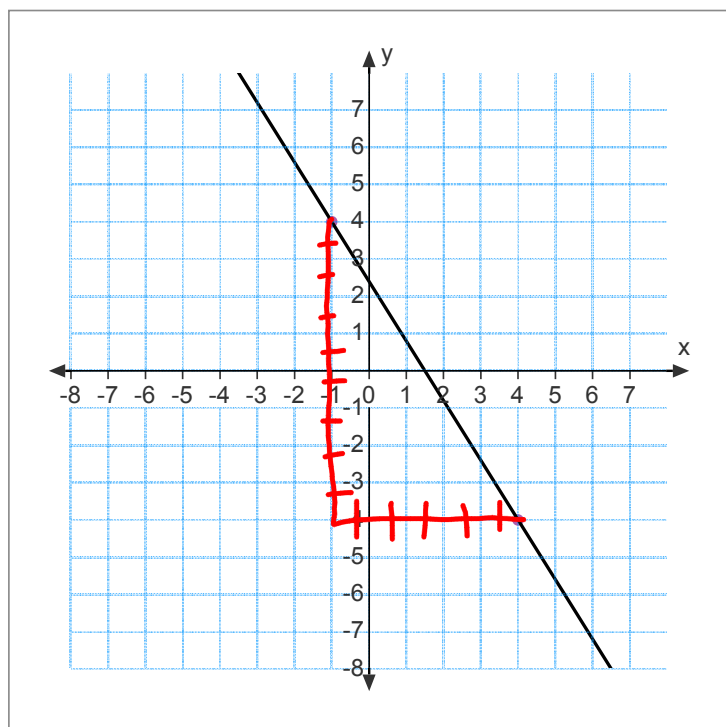
Neg.

Zero

Undefined

Slope =  $-\frac{2}{5}$





## Slope

Pos.

Neg.

Zero

Undefined

