

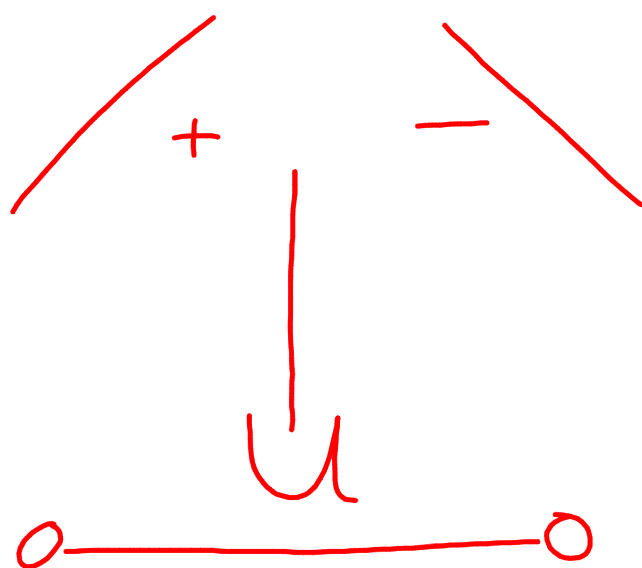
Bell Work

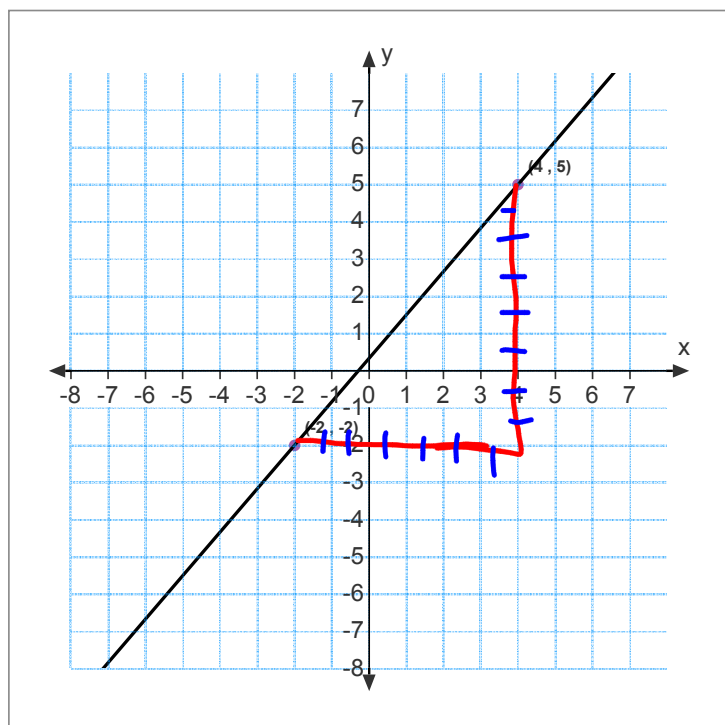
2/27/2015

Please get a white board, dry erase
marker, and an eraser.



Slope Face





Slope

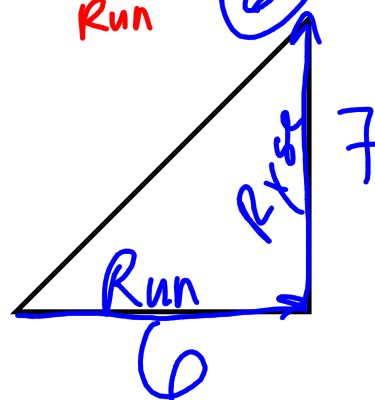
Pos.

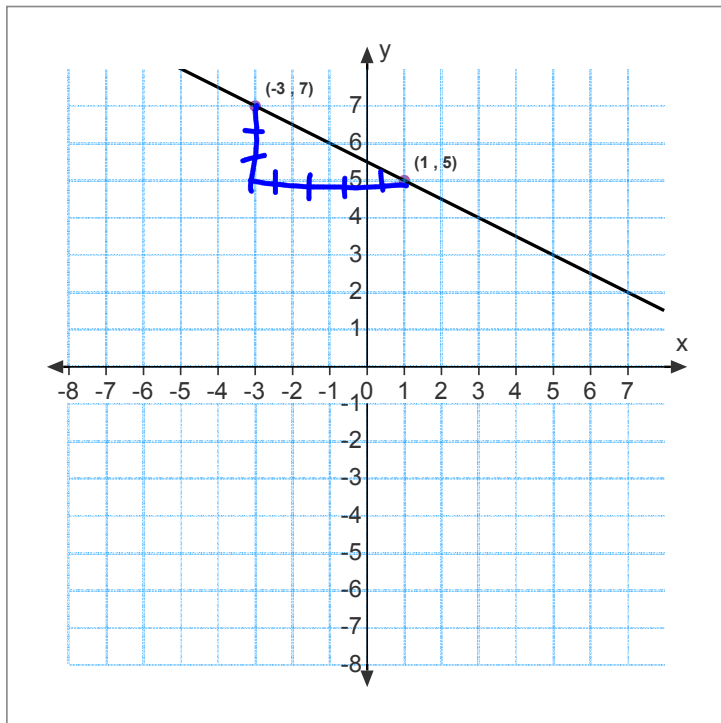
Neg.

Zero

Undefined

$$\text{Slope} = \frac{\text{Rise}}{\text{Run}} = \frac{7}{6}$$





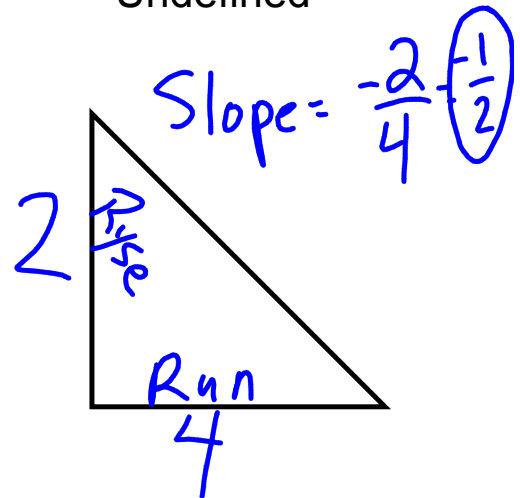
Slope

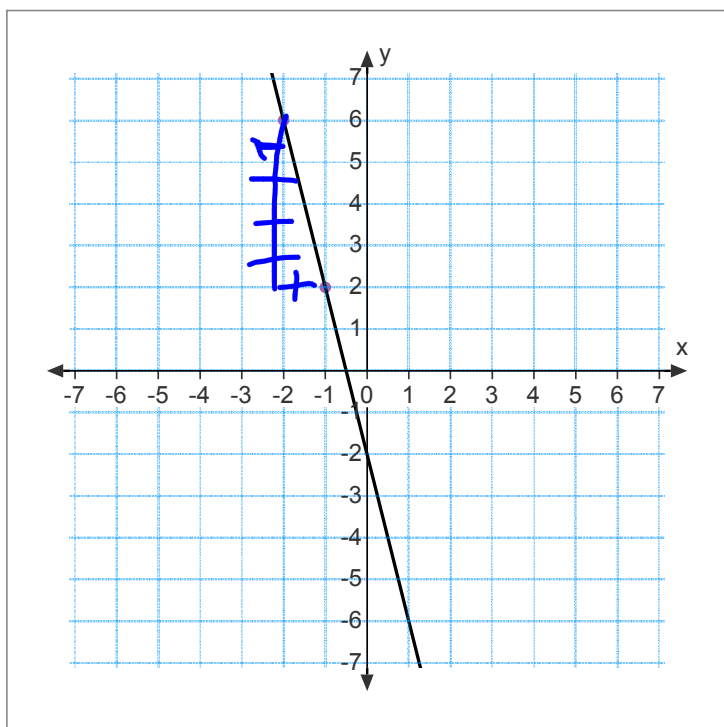
Pos.

Neg.

Zero

Undefined





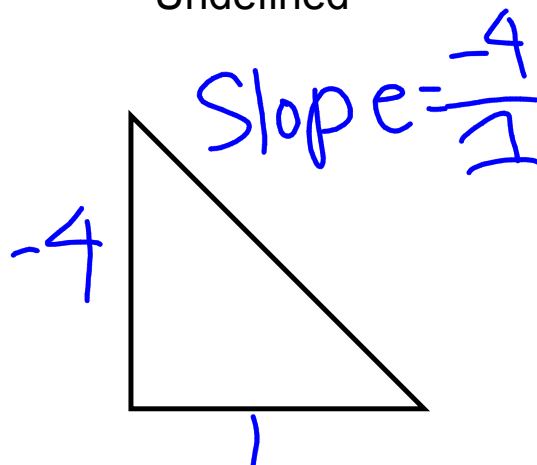
Slope

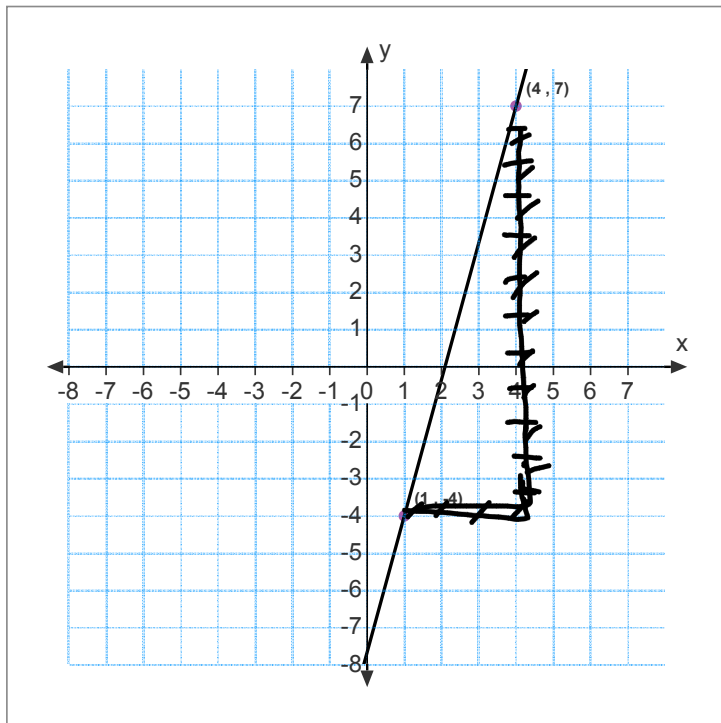
Pos.

Neg.

Zero

Undefined





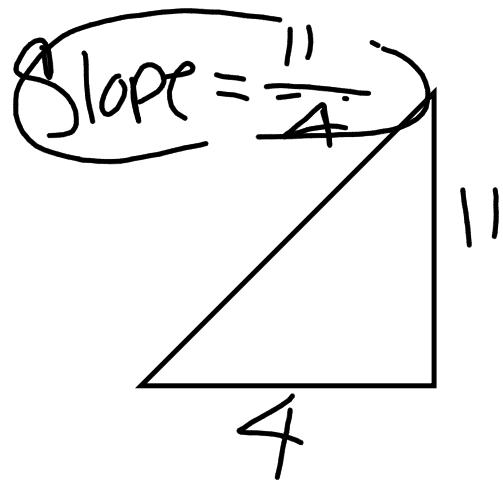
Slope

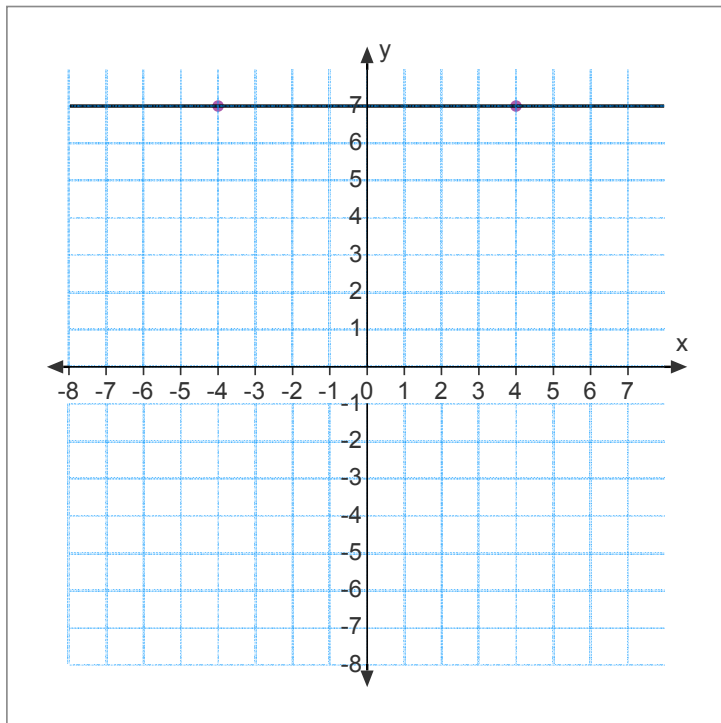
Pos

Neg.

Zero

Undefined





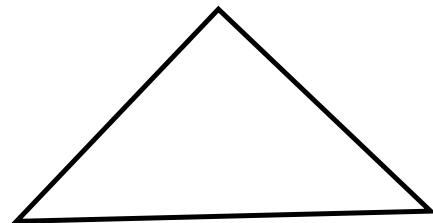
Slope

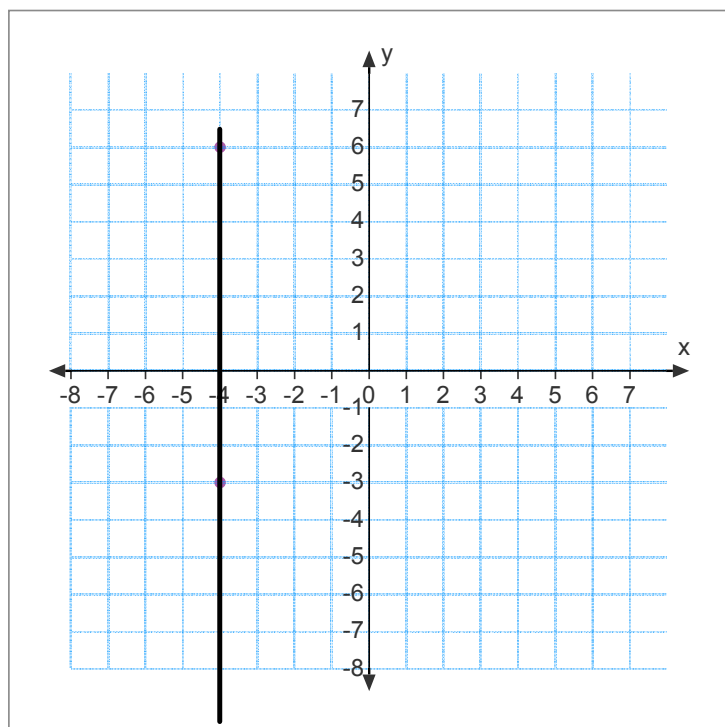
Pos.

Neg.

Zero

Undefined





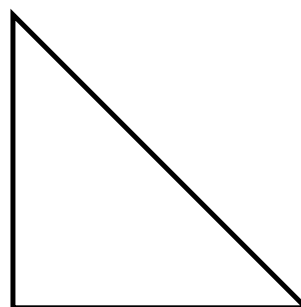
Slope

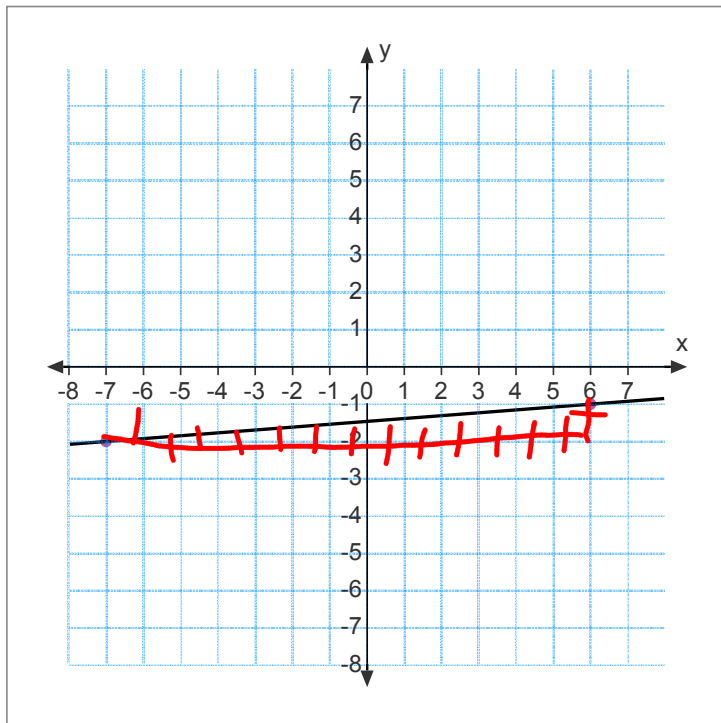
Pos.

Neg.

Zero

Undefined





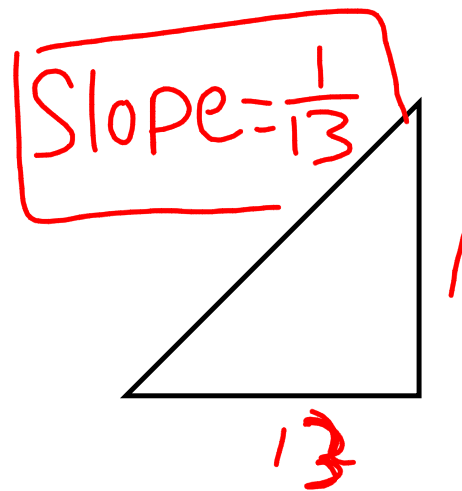
Slope

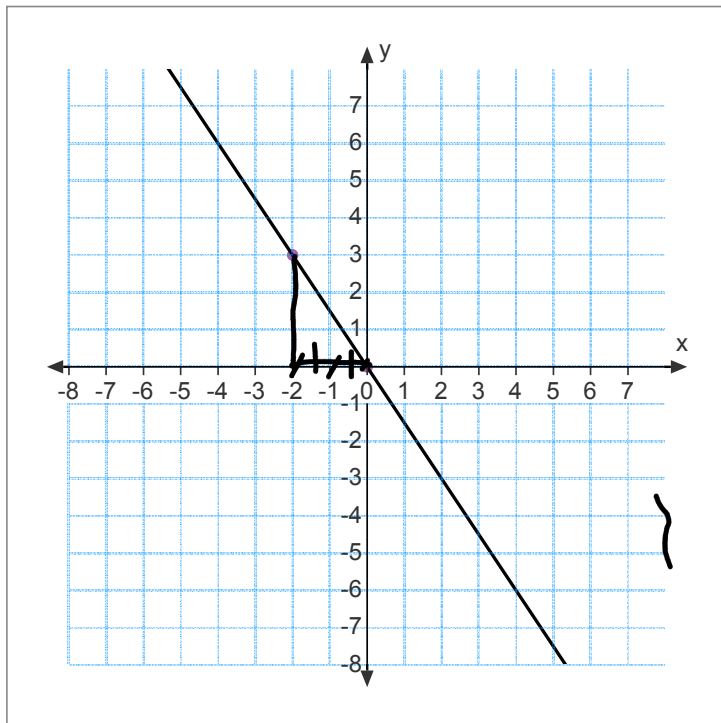
Pos.

Neg.

Zero

Undefined





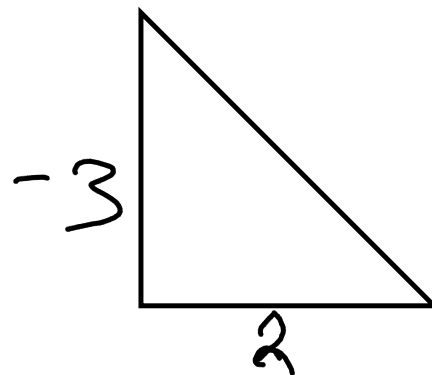
Slope

Pos.

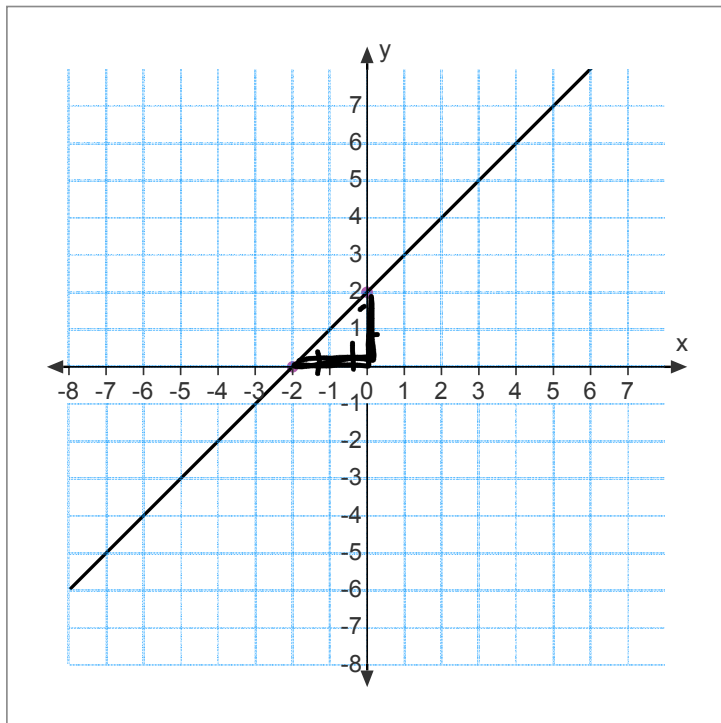
Neg.

Zero

Undefined



-



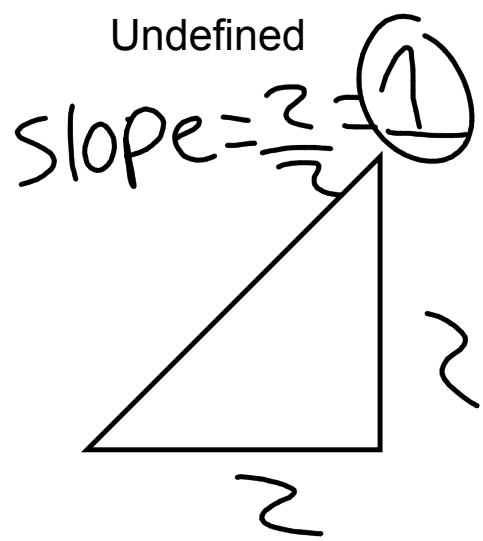
Slope

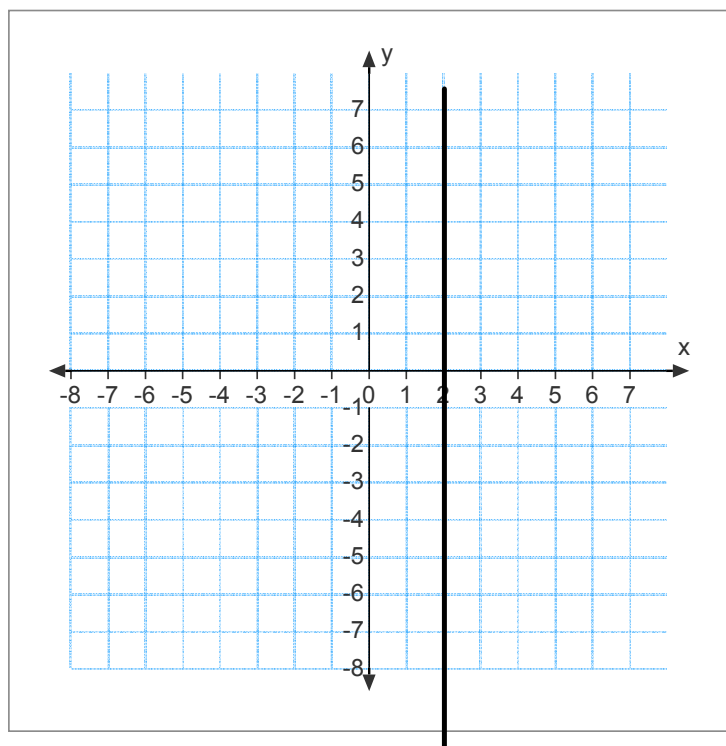
Pos.

Neg.

Zero

Undefined





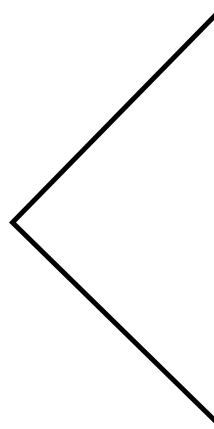
Slope

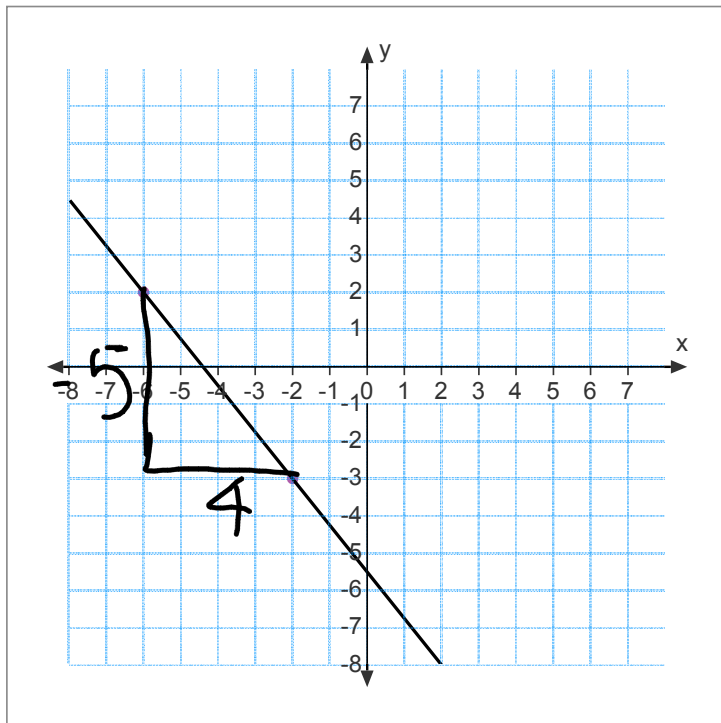
Pos.

Neg.

Zero

Undefined





Slope

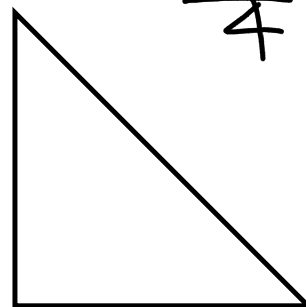
Pos.

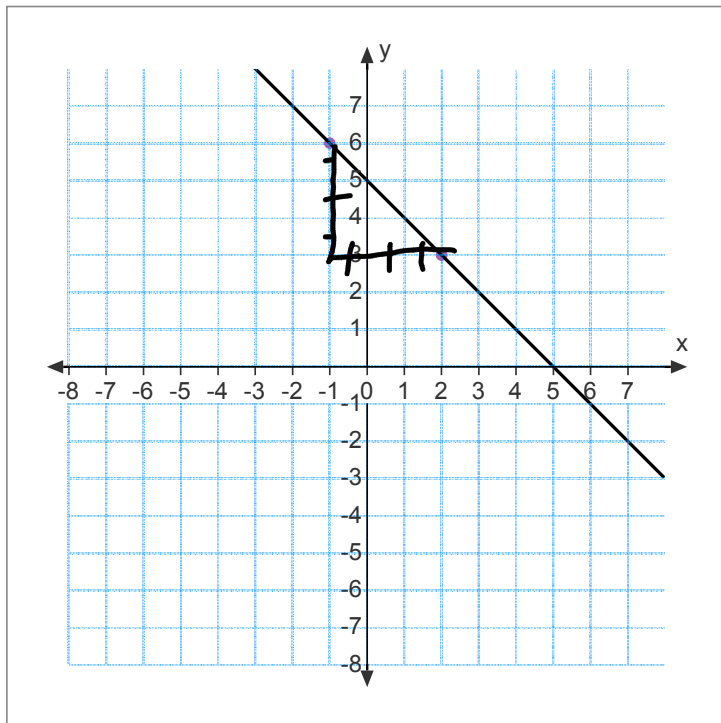
Neg.

Zero

Undefined

$$\text{Slope} = \frac{-5}{4}$$





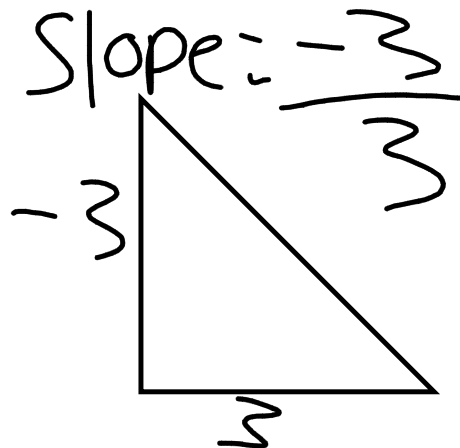
Slope

Pos.

Neg.

Zero

Undefined



Student #
SS: _____ LEVEL _____ Goal: _____ How: _____

Below Basic
Basic
Prof.
Adv.

